

PRECISE. CUSTOMER SOLUTIONS FOR YOUR SUCCESS.

We can confidently propose solutions that are precisely tailored to your applications and preferences. Because of this, we think across industry boundaries and are ready to support you from the concept stage until the order is fulfilled.

Together and in a process-oriented way we do everything to ensure that you receive extensive consulting and the product that meets your quality standards and ours.



Create high-strength tool-less connections easily with DIRAK-Snap-Technology (DST): The precise fit in the sheet metal cutout ensures a high-strength friction-locking connection that fits perfectly in every application and for every load.



E-LINE by DIRAK, our brand for mechatronic latching solutions, offers modularly designed product systems for data and server cabinets and housings for outdoor use and industrial applications. With our product solutions, you control access to and organize security for your housings – either as a standalone solution or integrated into a management system. To see for yourself, visit elinebydirak.com

You can find solutions at dirak.com



200
Over 200 items picked per hour

300
More than 300 packages a day

600
Over 600 employees worldwide

4500
Over 4500 catalog products

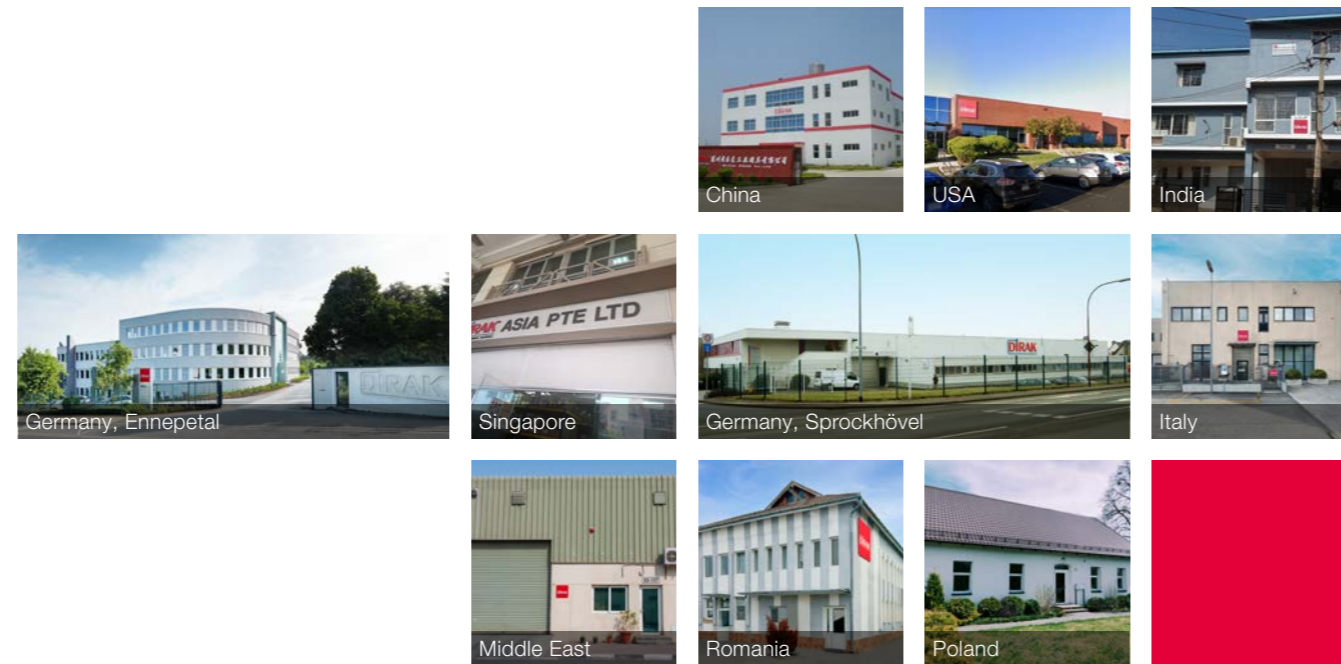
19,200
Automatic small parts storage with 19,200 storage spaces

NUMBERS. DATA. FACTS.

Construction and assembly at two locations in Germany are based on the highest quality standards, ensuring exclusively high-quality products in sales.



PERSONAL. WITHIN REACH THANKS TO A WORLDWIDE NETWORK.



910-0414.02-00000 • 04/2023

We work in a global network consisting with locations in Europe, America and Asia with a total of over 600 employees. Numerous distributors also support our sales worldwide.

Find the right contact person for your region:
dirak.com/en/contact



SIGN



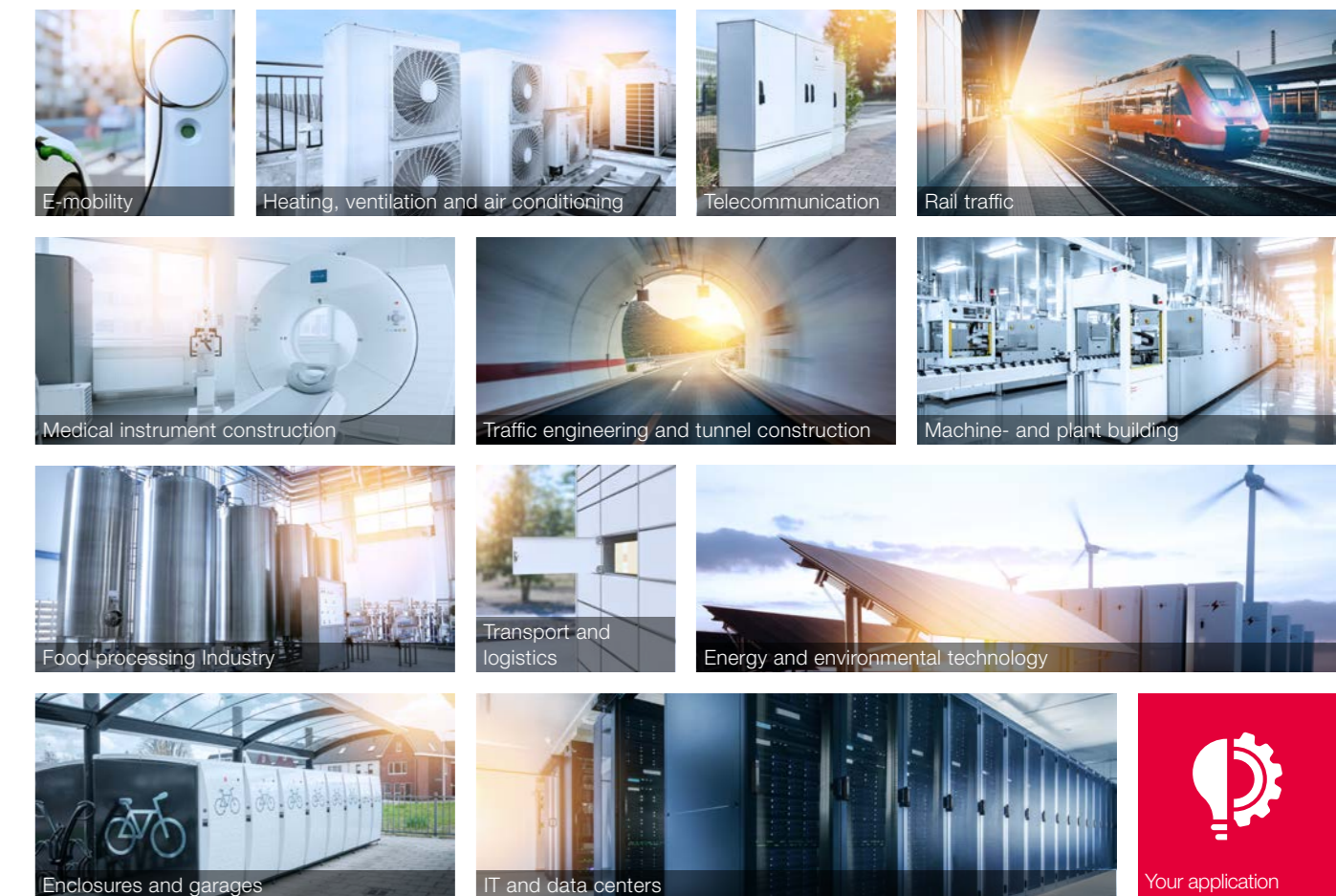
PIONEERING. LATCH, HINGE AND FASTENING TECHNOLOGY SINCE 1991.



DIRAK products offer solutions fit for the future. Thanks to the new technologies developed by us, we are always one step ahead and set trends in latch, hinge and fastening technology. The creative ideas of our employees form the basis of this. All of these ideas center around the question:

How can we respond to the challenges of our customers?

APPLICATIONS



Quarter-Turns

Quarter-turns are used as a latching mechanism in numerous applications. From vibration-proof compression quarter-turns to quarter-turns with a locking position display, we offer the widest range of variants. Special seals, grounding clips and other elements and materials can also be added for special requirements.



1-092 Quarter-Turn 2K Polyamide

With moulded-in, captive seal. Tool-less pre-assembly.



7-071 Compression Latch with Flap Stainless Steel

The flap only closes in locked state and thereby indicates the locking position. Compression 6 mm, vibration-proof. Stainless steel.



1-079 Compression Latch with H-Dimension Adjustment

Flat head shape. Marking on housing head. Vibration-proof according to DIN EN 61373. With compression 6 mm.



7-086 / 7-087 / 7-087.01 Flush-mounted Compression Latch Stainless Steel

Flush mounted design. Vibration-proof according to DIN EN 61373. With compression 6 mm. Stainless steel.



Dirt-repellent shape, mirror polish surface. High resistance to corrosion and temperature, insensitive to cleaning agents containing acids and alkalines.

Swinghandles

In comparison to a simple quarter-turn, swinghandles provide a higher torque. These latches can be used for example for professional access control to server cabinets. We also offer designs with safety-tested variants.



3-400 Swinghandle Base

System for round or flat rods. Reliable and tool-less pre and final assembly in seconds. Expandable in multiple ways.



2-090 Swinghandle

System for round rods and profile cylinder, insert or combination lock. Available with cylinder dustcover.

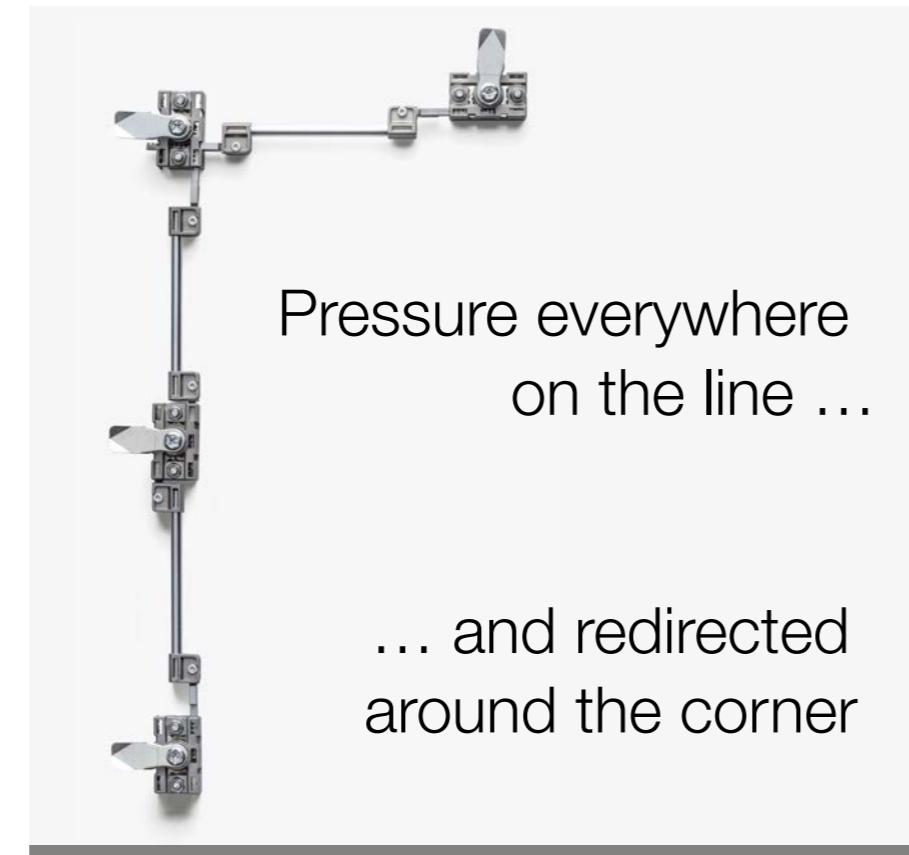
24/7 secure.



Mechatronic access control for industrial housing construction. Visit our homepage: elinebydirak.com

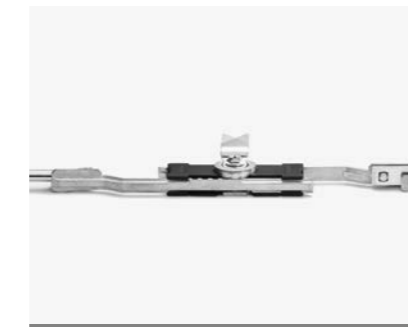
Multi-Point Systems

We also offer rod latches for multi-point systems, so you can feel secure at all times. They can be easily combined with our quarter-turns, swinghandles or T- and L-handles and can also be used on round and flat rods. Multi-point systems are especially well suited for applications that must be vibration-proof and achieve high contact pressure.



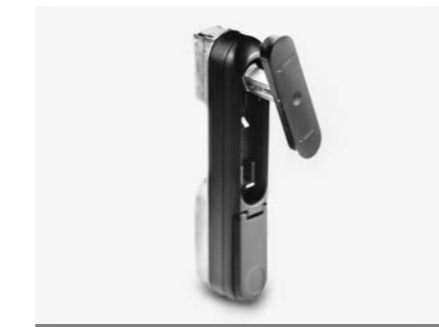
3-211 / 3-215 Compression Rod Latch and 90° Redirection

One or multi-point system with connecting rods, for assembly within the sealing area. With compression 4 mm, vibration-proof. For round rods Ø 8 mm or flat rods 3 x 14 mm.



1-350 Rod Latch for Quarter-Turns

Dual rod holder for flat and round rods. Quick assembly of the rods, for universal applications



3-145 Eject and Turn T-Handle

T-handle latch with 90° swing-out and 135° rotating T-handle element. Safety tested in accordance with DIN 1630 RC2.

Latches

In addition to standard latches, we offer numerous latching systems for special applications, for example: snap locks, over center toggle latches and quick release fasteners.



6-151 Slam Latch

Two-part latch, reduced noise with integrated stop. Convenient opening and independent closing as it engages.



6-160 Compression Lever Latch

Flat latch with release button and large assortment of inserts. Vibration-proof.



6-212 Indexing Plunger with Rest Position

Can be used as indexing plunger and pin hinge. Available with 2, 3 and 4-mm head height for different gap dimensions.

Fastening Technology

Our tool-less connecting elements have been specially developed for demanding industrial environments and make it easy to install our components in just seconds.



6-045 Cage Nuts

High tensile force for firm connection of metal sheets. Tool-less installation.



1-041.02DST DST Captive Fastener

High-strength with friction locking, no tools required. Meets the requirements of Machinery Directive 2006/42EC and is vibration and seismic-proof.

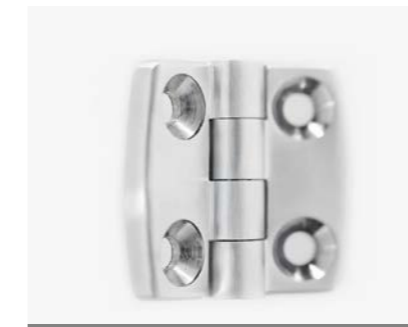


1-044DST DST Dual Fastener

For firm, tool-less connection of two metal sheets.

Hinges

With our wide and varied range of hinges, we can meet practically any customer's wish. As special equipment we make our hinges available for tool-less installation (DIRAK-SNAP-Technology) or in different materials including zinc die-cast, polyamide and stainless steel.



7-201 Hinge

With invisible pin, vibration-proof, 180° opening angle. Pr01. Stainless steel.



4-394 Pin Hinge

Easy spring-supported removal and installation of doors. Can also be used as locking pin. Pin diameter 6 or 8 mm, material thickness up to 4 mm can be used.



4-125DST DST Concealed Hinge

Concealed, captive pin, tool-less installation, 130° opening angle.

To see our complete assortment visit dirak.com. For further details on the products that are shown simply enter the search number and find the product.

Gaskets

For use in housing and switch cabinet construction, we have developed optimized gaskets for a wide range of different applications and purposes. We offer these in different cross-sections, profile shapes and fastening variants and as special format on request.

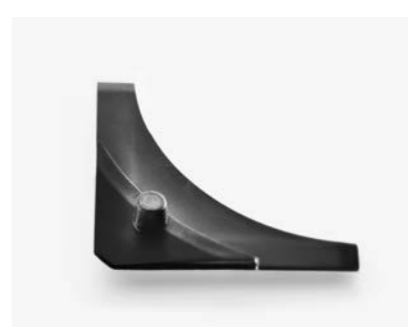


5-100 Four Lips Channel Sealing Profile EPDM

No incorrect installation

5-100 Four Lips Channel Sealing Profile EPDM

Easy tool-less installation with no mistakes thanks to symmetrical structure. Pressure-insensitive seal in both directions.

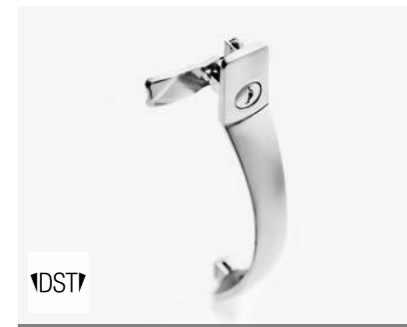


5-171 Corner Radius

Optimum corner radius for precise installation of gaskets.

Handles

We have optimized our assortment of handles for a large number of applications. Many handles can be installed without a tool if desired (DIRAK-SNAP-Technology) and are available in zinc die-cast, polyamide or stainless steel.



6-1110DST Bowed Handle with Quarter-Turn

Tool-less installation. Clipped in for precise fit.



6-1000.01 Bridge Handle PA

Can be used vertically and horizontally. Insensitive to dirt and corrosion-resistant, functional design.

Supplementary Products



6-062 Cable Management Device

Flexible, system-compatible cabling. Cutout □ 9.5 mm. Tool-less installation with additional fastener.



7-073.01 L-Handle for Padlock

Exact height adjustment of the cam with the new square threaded rod. Stainless steel.



6-1680 Machine Handle for Sliding Doors

With hooked cam and free stroke, specially designed for sliding doors, for example on machine tools.



6-170 Telescopic Cover Stay

For covers and desk-leaves. With automatic locking and unlocking device. Sturdy design.