

The logo for DIRAK, featuring the word "DIRAK" in white, bold, sans-serif capital letters inside a white rectangular border, set against a solid red square background.

DIRAK

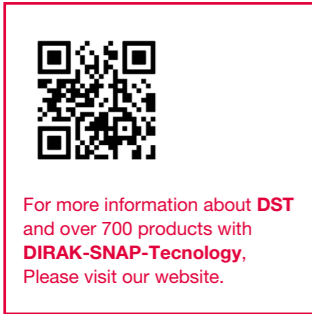
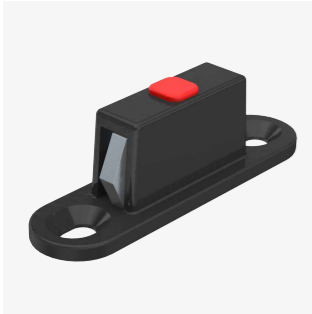
The logo for DST, consisting of the letters "DST" in a bold, black, sans-serif font, flanked by two black triangles pointing towards each other.

DST

A close-up photograph of a human finger resting on a black fingerprint scanner. The scanner is positioned on a stylized, low-poly globe with a blue and white color scheme. In the background, a city skyline is visible, with several skyscrapers and a bridge. The overall scene is set against a light blue sky with a few small, white, rectangular objects floating in the air.

SIMPLE. SECURE.

DIRAK-SNAP-TECHNOLOGY



For more information about DST and over 700 products with DIRAK-SNAP-Technology, Please visit our website.



Unlimited Possibilities

A Portrait of DIRAK-SNAP-Technology

DIRAK-SNAP-Technology makes it easy to explore new paths at any time and discover unlimited possibilities. Take advantage of the best solution for your applications and experience the special features of this pioneering technology – discover what is possible.

In a world full of fasteners, we deliver the pioneering technology. With DIRAK-SNAP-Technology (DST), you can create high-strength fasteners easily and without tools – so that your idea can be turned into something great.

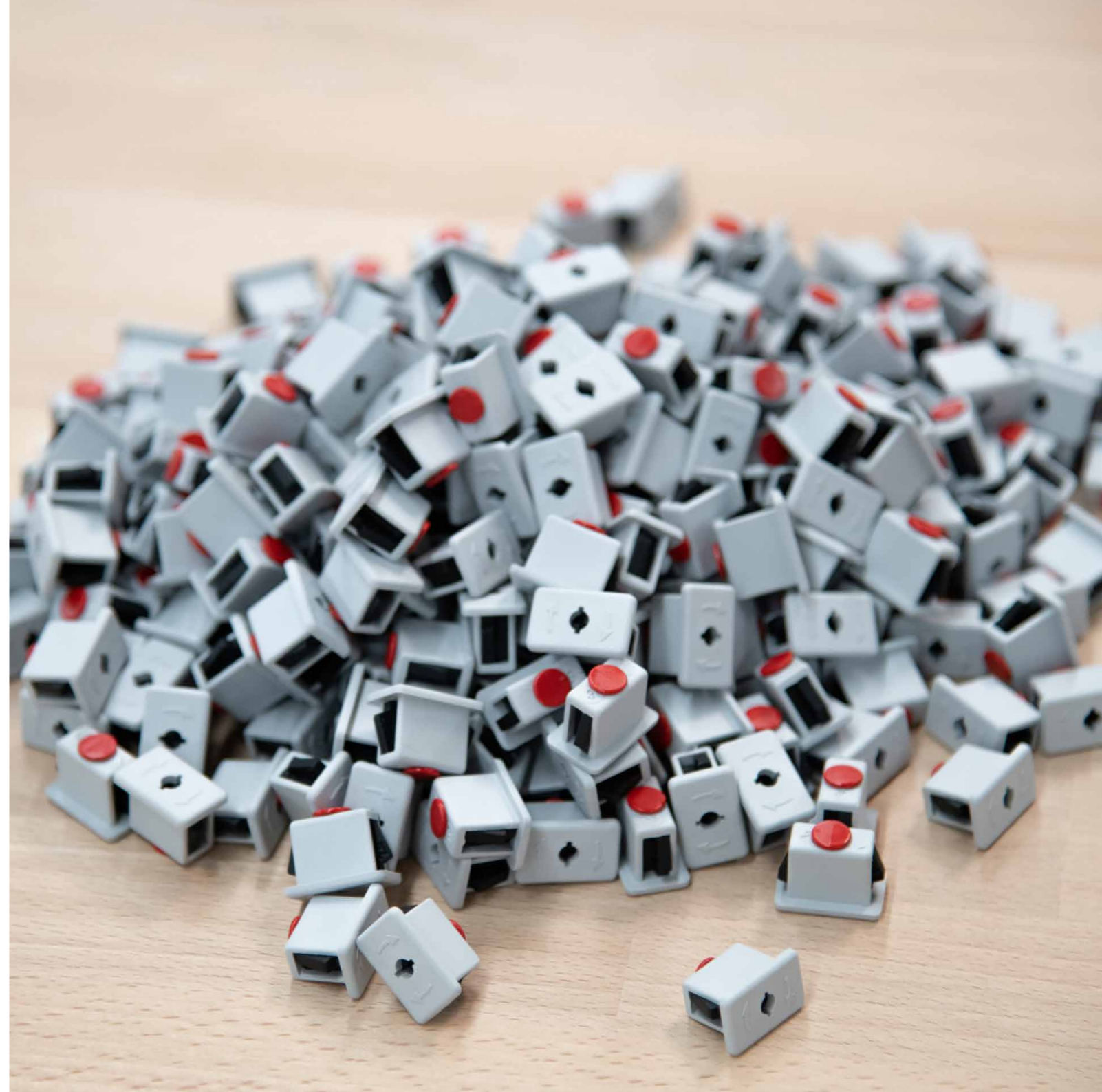
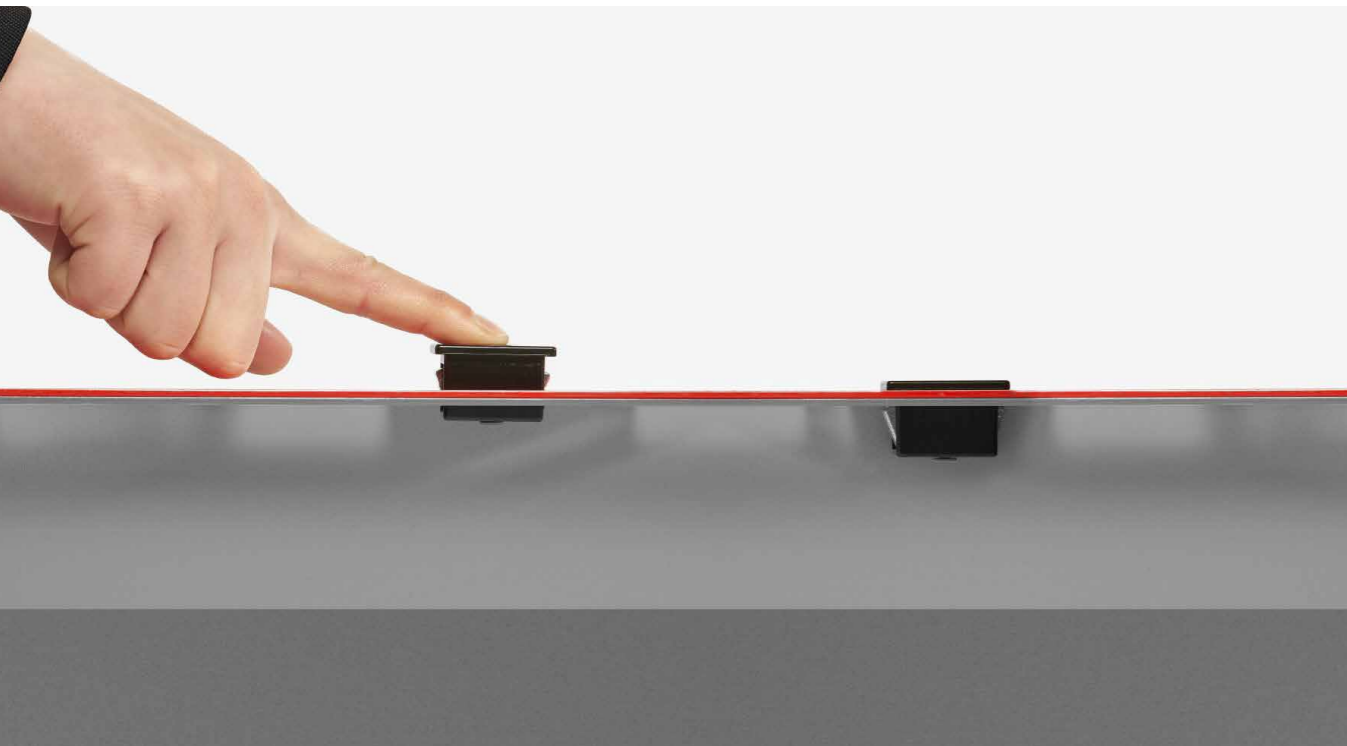


The Technology

DIRAK-SNAP-Technology is based on the functional principle of a latch lock, as found in house or room doors. This is based on two individual parts: the so-called guide with beveled clamping jaws and a spring that sits in a window inside the guide. These SNAP elements are inserted into the guide channel of a carcass and held in place by a fixing plug.

If this fastener is now pushed through a cutout, the chamfer of the clamping jaws pushes the SNAP element back into the guide channel like a bolt. This tensions the spring.

As soon as the height of the clamping jaws is overcome during insertion, the tensioned spring pushes the SNAP elements out of the guide channel again. This produces the typical “SNAP” sound. The fastener is now clamped in the cutout and holds the elements to be connected together very firmly.





Your Benefits Endlessly Diverse.



High strength and secure locking

DIRAK-SNAP-Technology can withstand heavy loads and guarantees high strength and high pull-out torques that are on a par with a bolted solution.



Fastening materials of different thicknesses

Our DST products are available in different versions for various material thicknesses or for your individual requirements. If required, additional reinforcement plates increase the stability and load-bearing capacity.



Rattle, vibration, and seismic-proof

DST products are vibration-resistant and can withstand the heaviest loads without losing their accuracy of fit, securing and connecting function. Many of our DST products have been successfully tested for vibration and shock (DIN EN 61373) and earthquakes (GR-63-CORE, Issue 4).



Reliable and error-free installation, even in hard-to-reach places

With DST, your applications are always perfectly mounted. An audible click and your application is reliably mounted, even in awkward and hard-to-reach places.



Tool-less installation in seconds

Products with DIRAK-SNAP-Technology are installed in seconds without the need for additional tools.



Secure and electrically grounded

Components with DIRAK-SNAP-Technology can not only make secure connections, but also electrically grounded connections thanks to the optional use of a grounding clip.



Safe and convenient removal

A large number of DST products are just as easy to dismantle as they are to install. Depending on the design, this is possible with standard tools or with DIRAK-specific special tools.

DST Fastener

For the quick and easy connection of metal sheets.

This one-piece DST fastener is vibration and seismic-proof. The metal sheet is fastened by simply clipping it by hands into the provided cutout. It also meets the requirements for Machinery Directive 2006/42EG and is captive. After the pre-installation, losing, dropping, and misplacing are no longer possible. With a screwdriver, Phillips H2, the fastener can be disassembled from the front.



1-041.06DST

The DST fastener for fastening metal sheets is intended for a cutout measuring 30x10 mm. It is easily clipped into the cutout.



1-042DST



1-044DST



The DST dual fastener for a cutout measuring 30x10 mm enables the firm connection of two metal sheets. For tolerance compensation, the fastening element is provided with a housing length of 28 mm on one side.



1-046DST



The DST fastener results in a connection that is tightly screwed on one side and redetachable on the other. A larger cutout width can be selected for adjusting. Blind assembly is possible in closed profiles. For flush-mounted assembly, the fastener can be screwed into an indentation (metal sheet) or recess (wood).

Products with DST

DST is available for many products, for example:

The flush **DST quarter-turn** can be used left and right and is clipped into the 32x20.1 mm hole pattern without any tools and blind assembly is possible. It can be properly aligned through the rectangular cutout. It is vibration and shock-proof in accordance with DIN EN 61373, as well as dust and water-proof in compliance with IP65 in accordance with DIN EN 60529. Planetary gear enables a large transmission ratio with high contact pressure.



1-081DST

This **standard swinghandle** can be locked by using a profile cylinder with 45° or 90° cam position. The swinghandle offers IP65 protection in accordance with DIN EN 60529 and provides reliable protection against dust and water. A Sliding Cap can be mounted if required.



2-090DST

The **DST recessed handle PA 6-1411** is almost flush with the surface and has a large recessed grip for comfortable handling. Thanks to DIRAK-SNAP-Technology, the recessed handle can be mounted without tools. It also offers IP65 protection in accordance with DIN EN 60529.



6-1411DST



7-285DST



The **DST corner hinge for surface-mounted doors** is visible and can be used right and left. It is IP65-protected in accordance with DIN EN 60529. The DST hinge is available in two designs: With the first version, both hinge halves can be easily clipped in through DIRAK-SNAP-Technology, without any tools. With the second version, one of the hinge halves is fastened with M6 screws, the other is clipped in.

11



6-1600DST

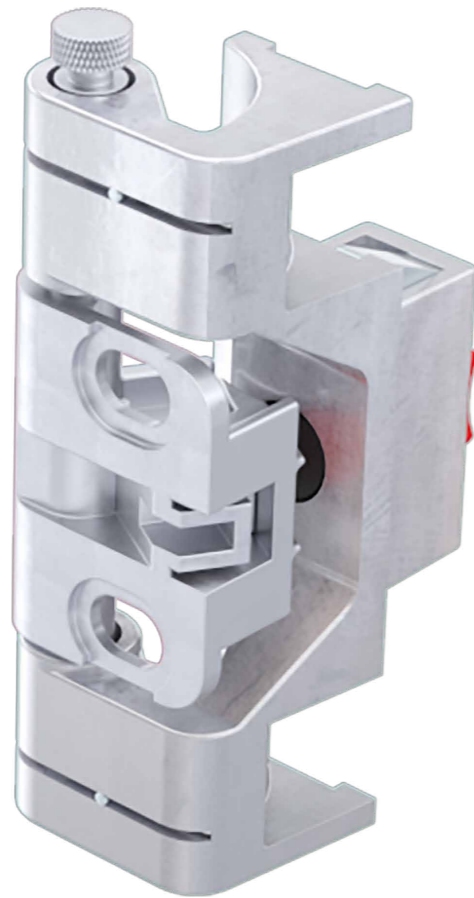


The **DST handle** can be used in different ways through various tube lengths, it can be mounted without any tools and the tube fits accurately and firmly to the central support and to the end pieces. Thanks to its large circumference, the tube guarantees a secure and firm grip, and is insensitive to dirt and easy to clean.

10

Quickly Installed, Securely Connected

The DST concealed hinge is designed for surface-mounted doors and enables concealed, tool-less installation. The door-part is securely connected to the pre-assembled pin by simply clipping it on. With an opening angle of 130°, a bevel of 23 mm and RH and LH version it can be used flexibly. IP65 protection in accordance with DIN EN 60529 ensures reliability even in demanding environments.



4-125DST



4-182.05DST



Versatility With a System

The DST hinge Pr05 180° is ideal for surface-mounted doors on modular enclosures and offers tool-less installation of the frame and door-parts. The pre-assembled, captive hinge pins make it easy to remove and insert the door at an opening angle of around 30°. With a bevel of 25 mm, an opening angle of 180° and flexible right/left mounting, the hinge is versatile in use. Optional IP65 protection in accordance with DIN EN 60529 rounds off the robust functionality.



DST Fasteners in use at HAROMAC

**Screwless fastening technology for a quick,
tool-less installation of workbenches**

Oliver Lück, Managing Director of the HAROMAC tool factory, explains: "Our workbenches presented a new challenge for us, they had to provide good load-bearing capacity and be easy to assemble without any screws and with just a few tools".

We at DIRAK gladly accepted this challenge and were able to solve the problem of the HAROMAC tool factory quite easily thanks to DIRAK-SNAP-Technology. With DST fasteners, work-benches are now assembled quickly using no tools, the fasteners are simply pressed into the cutouts in the sheet metal walls: "SNAP". Secure.

„ DST fasteners meet our standards for fast, tool-less assembly and good load-bearing capacity, and they are especially well suited for our workbenches “

Oliver Lück, Managing Director of HAROMAC

The **DST fastener** for connecting plates for cutouts of 8x15 mm can be disassembled with the tool 292-0302.70 both from the inside (removal of the red plug) and from the outside. When opened, the tool cannot be removed. The housing is available in black or light gray RAL 7035.



1-040DST

Pioneering
in Latch, Hinge and
Fastening Technology



Quarter-Turns



Swinghandles



Rod Latches

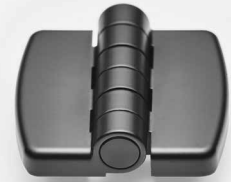


Handles



Fastening Technology

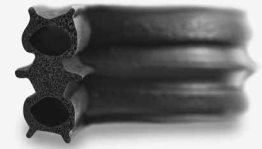
DIRAK[®]



Hinges



Mechatronic Locking Systems



Gaskets

DIRAK is more than that!

We have plenty of other product solutions for your fields of application.

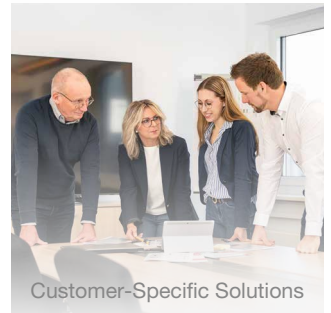
Contact us:

contactrequest@dirak.de
Phone: +49(0) 2333/837-0

DIRAK.com



Latches



Customer-Specific Solutions