

The DIRAK logo is located in the top left corner. It consists of the word "DIRAK" in a white, bold, sans-serif font, enclosed within a white rectangular border. The logo is set against a solid red square background.

DIRAK®

The background of the image is a dark, futuristic scene. It features a prominent, glowing blue arc of light that curves over a dark, arched opening. The light has a soft, ethereal quality, suggesting a high-tech or mechatronic environment. The overall aesthetic is sleek and modern.

**SAFETY FOR CONNECTING
MECHATRONIC LOCKING
SYSTEMS**



Make the Right Connection: Optimize with Mechatronics Now

The demands on latching systems are continuously increasing – especially due to digitization and the resulting growing possibilities of safety technology in all application areas. A simple lock is often not sufficient for current standards or simply does not offer enough flexibility for complex requirements.

Discover the benefits of mechatronic products now. Monitor access control even more effectively by precisely documenting and managing every access. Increase security in particularly sensitive protected areas. In short: Find the best solutions for your areas of application with mechatronic locking systems from DIRAK.



Controlled access and seamless documentation

By precisely controlling and monitoring physical access to enclosures, our systems create an increased sense of security. The detailed access documentation enables processes to be monitored with confidence and well-founded decisions to be made.



Future-proof

Our mechatronic locking solutions meet current standards and offer the necessary flexibility to handle even complex requirements that go beyond the capabilities of conventional locks.



Organized security

Our mechatronic locking solutions offer customized access control that is tailored to the user's specific requirements. This ensures a structured and effective security organization.



Simplicity and convenience

Our product systems significantly reduce the effort involved in key management, for example. They can be integrated into existing systems and offer functions such as remote opening and keyless opening. Operation via the management software provides additional convenience and efficiency.



Modular concept

Our products are holistically designed and have a modular structure. This enables seamless networking of locking and management systems, enclosures and users. They can also be flexibly supplemented and expanded with a wide range of products from the DIRAK portfolio.



The Sturdy Handle

Thanks to its magnetically secured and screw-fastened cylinder cover, the swinghandle MLE1101 offers protection against external influences and reliably withstands vandalism thanks to its RC2 classification in accordance with DIN EN 1630. The handle status can be evaluated via an integrated potential-free reed sensor. The swinghandle is also protected against dust and water to IP65 in accordance with DIN EN 60529.

The swinghandle MLE1102 is the perfect partner for smart applications. In addition to the functions of the MLE1101, it offers electronic unlocking by applying voltage and can be easily integrated and controlled in existing management systems. The handle can withstand the effects of weather thanks to its UV-resistant powder coating and IP65 tightness.

With the MLE1102 LED, the swinghandle's readiness to open is also visualized by an LED. All three swinghandle systems are available in both black (RAL 9005) and gray (RAL 7038) and thus adapt perfectly to the respective installation situation.



MLE1101



MLE1102



MLE1102 LED

Mechatronic Protection of Machines and Housings

MLI latching solutions provide you with the best protection by connecting to the control system of plants and machines. The swinghandle is locked mechatronically and can also be opened by key. An LED visualizes for the user when the swinghandle is ready for opening. The latch position of the handle can be evaluated. This increases operator safety and protects machine processes. Also available as variant with square insert (8mm).



MLI1101

MLI1101





Quarter-Turn with Power

More control and protection thanks to evaluable quarter-turn: Increase security on industrial machines and housings with precise mechatronic access control. The MLI quarter-turn can also be integrated into existing management systems.



MLI1102

The Smart Handles

The swinghandle MLR1000 was developed for sensitive safety areas. It can be seamlessly integrated into existing management systems, while the status LED and backlit info field ensure clear user guidance.



MLR1000

MLR1000

The MLR2500 offers easy system integration thanks to a Wiegand interface. With its integrated hybrid antenna, it enables a high degree of flexibility in the selection of access media and transponders. The MLR2500 is optionally available with an integrated keypad (KP), which enables additional authentication and further increases access protection.



MLR2500

MLR2500





Controlled Access for Centralized and Decentralized IT Infrastructures

Whether in centralized data centers or distributed locations, our swinghandles MLR3000 and MLR5000, in combination with our Administration Suite software, are ideal for IT environments with increased security requirements. The MLR3000 is designed for central infrastructures with many server cabinets in close proximity to each other.

The MLR5000, on the other hand, is the perfect solution for decentralized IT environments with server cabinets in different locations. Each handle has an Ethernet interface and can therefore be integrated directly into the TCP/IP network. Both product systems can be optionally equipped with an integrated keypad (KP), which offers an extended security check and further increases access protection.



MLR3000



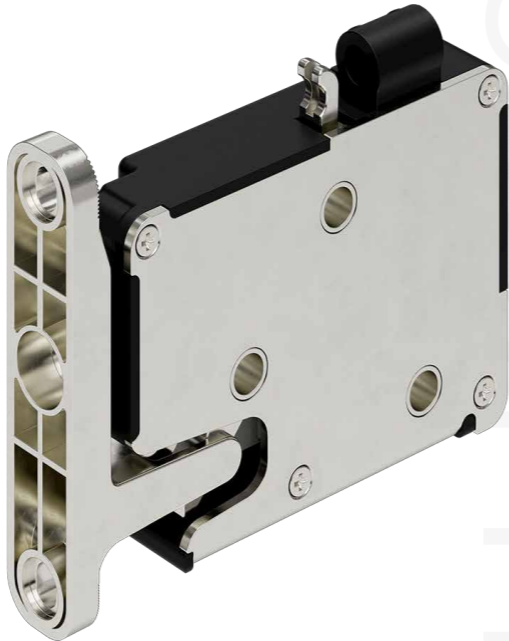
MLR5000



Simply Connect, Open in a Controlled Manner, Lock Precisely.

The MLU1002 and MLU1003 electronic Rotary Slam Latches ensure a high level of security because the locking status can be evaluated. In addition, premium high-end materials ensure high load capacity and durability. Both latches can be connected to existing management systems. The exceptionally strong holding force and concealed installation increase the safety of any application.

The MLU1003 electronic Rotary Slam Latch provides additional security: It indicates not only the locking status, but also the door status.



MLU1002



MLU1003



Pioneering
in Latch, Hinge and
Fastening Technology



Quarter-Turns



Swinghandles



Rod Latches



Handles



Fastening Technology

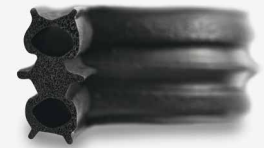
DIRAK[®]



Hinges



Mechatronic Locking Systems



Gaskets

DIRAK is more than that!

We have plenty of other product solutions for your fields of application.

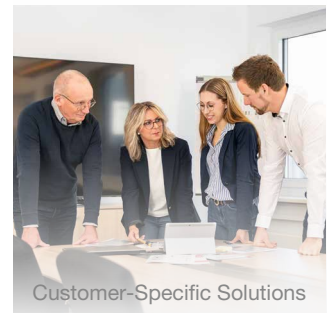
Contact us:

contactrequest@dirak.de
Phone: +49(0) 2333/837-0

DIRAK.com



Latches



Customer-Specific Solutions