

DIRAK[®]



**HIGHEST QUALITY STANDARDS IN THE
RAIL TRANSPORT SECTOR**



Highest Demands Our Products Meet all Rail Transport Requirements

Custom solutions for rail transport have been tried and tested for decades. They meet special application requirements in terms of impermeability, vibration resistance and protection, even at high speeds. The service life of rail vehicles calls for particularly high-quality and durable products that ensure a consistently secure connection in the interior, exterior and in all applications of the rail transport.



Visibility

The use of latches with latch position indicators saves time and increases the safety of users and passengers in rail vehicles, as the latching status of the product can be seen at a glance.



Vibration and shock resistance

Due to the long service life of rail vehicles, special protection against vibration and shock is essential. Vibration and shock tests have shown that all tested products comply with the following basic and test standard: DIN EN 61373.



Weather resistance

The products on rail vehicles are exposed to extreme weather conditions outdoors and require a high level of resistance. We develop solutions that can withstand these conditions and ensure safe operation.



Fire protection tested

The most common causes of fire in rail vehicles are arson and defects in the electrical systems. A test scenario has been developed specifically for this emergency, which divides the products into various applications and fire protection classes and exposes them to temperatures of up to 1,000 °C for different lengths of time. Some of our products have been subjected to this test and fulfill the classification E60 (corresponds to 60 minutes at up to 1,000 °C) - with certificate.



Compression

Our product solutions with compression offer the user a high level of convenience when opening and closing. They enable uniform contact pressure at the same time and thus ensure tightness. This protects high-quality technology from the ingress of dirt, dust or water.

Noticeably Unnoticeable.

Thanks to the flush-mounted design, the quarter-turn does not extend outward, which prevents persons or items from being caught on them. This increases safety in escape routes, for example. The closed position is marked on the edge of the housing and on the insert. This makes it possible to see at first glance whether the rotary latch is open or closed. In addition, it is shock and vibration-proof and IP69K-protected in accordance with DIN EN 40050.



Simple. Secure.

▮DST▮

The DST fastener with DIRAK-SNAP-Technology was developed for a connection that is firm on one side and redetachable on the other. This enables various fastening options, such as screws with a countersunk head, for example. So that it is flush-mounted, the fastener can be mounted in a recessed position.



7-087



7-913DST



Photo Credits : Daniel Ammann



Photo Credits : Daniel Ammann

As Flat as Possible, as Deep as Necessary.

Space is usually in short supply on trains. For the Schweizerische Südostbahn AG's new Traverso, we have developed a secure and convenient locking system for the end wall housings in the interior of the train.

Our flat NT swinghandle product range (system numbers 2-066, 2-066.01 and 3-061) not only saves space in the carriage and protects passengers from possible injury. They are also dustproof and waterproof to IP65 in accordance with DIN EN 60529 and are ergonomic to handle.



2-066



2-066.01



3-061

Unique Optical Control.

Through an upright flap in an opened state, the locking position is easily visible from a distance — even in the dark. This is because the flap only closes when it is actually locked. At the same time, the spring-loaded stainless-steel flap cover prevents dust and dirt from soiling the quarter-turn.



7-071

Sturdy and Durable.

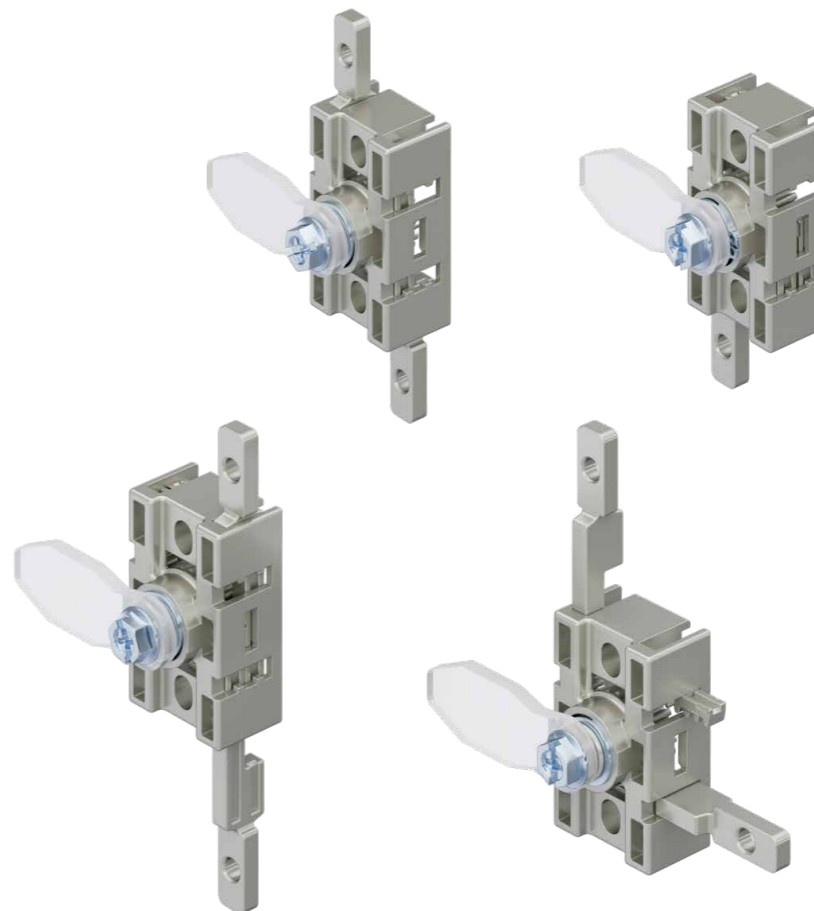
Outdoors, hinges should be especially durable and sturdy. DIRAK's stainless-steel hinge defies these challenges and is corrosion, weather and chemical-resistant.



7-131



3-211



Securely Locked.

Our 3-211 compression rod latch offers an outstanding solution for multi-point locking in rail transportation. The optimized rod connection and the optional use of clamping pieces ensure a stable connection. The innovative compression mechanism ensures an even seal and reliable locking.

Several locking points can be actuated simultaneously with just one locking operation, and the rod latch is certified to DIN EN 61373 as vibration-proof and vibration-resistant, thus meeting the highest standards of robustness and stability.



Has many Intrinsic Values.

The flat construction ensures a noble design of the quarter-turn. As a result, it also has a low attack surface for vandalism and climbing on. A colored marking indicates the current locking status of the lock. The cam of the resistant stainless steel quarter-turn can be adjusted via an H-dimension. Furthermore, it is grounded by a single-sided grounding nut and boasts a IP65/67 certification in accordance with DIN EN 60529.



7-079

Closed and Protected.

The compression latch with wing knob or round knob made of stainless steel with 6 mm compression ensures reliable locking. The contrasting color marking in the form of a padlock indicates the locking status. The compression latch is resistant to shock and vibration and offers protection to IP65/67 in accordance with DIN EN 60529. It is available in right-hand and left-hand versions. Earthing is made possible by a single-sided grounding nut and the H dimension can be flexibly adjusted via the cranking of the cam and the adjustment on the square threaded rod.



7-089

Shines all Down the Line.

The flush-mounted slam latch with stainless-steel, high-gloss polished housing does not protrude and can easily be unlatched by pulling the lever out of the housing. After it has been unlatched, the latch falls back into the “locked” position. Thanks to its closed design, dirt cannot accumulate.



7-330

7-330

One for All.

In rail transport, one has to deal with different closures in various fields of application, yet would still like to be able to work in a way that is flexible and convenient. This is why DIRAK developed the corrosion-free, universal square section wrench made from stainless steel that can open the four different inserts.



6-105

6-105



Photo Credits : Daniel Ammann

Firmly Engaged. Noticeably Secured.

The flat design of the Detend Quarter-Turn not only reduces the risk of snagging but also ensures an inconspicuous and secure application. Thanks to its IP65 certification in accordance with DIN EN 60529, the Quarter-Turn also offers reliable protection against dust and water. The integrated detend prevents external influences such as knocks or blows from releasing the latch. Haptic and acoustic feedback when opening and closing ensures intuitive operation.



1-084



2-071 m.tec



Magnetic Solution for Smart Unlocking

Our patented and innovative magnetic technology combines maximum security with smart functionality. The Swinghandle 2-071 m.tec is characterized by a flat design and a robust, tamper-proof construction. The Swinghandle is shock and vibration-proof in accordance with DIN EN 61373. At the same time, it is easy to use and is protected against dust and water to IP65 in accordance with DIN EN 60529. The locking mechanism is based on a defined arrangement of magnets. Due to the magnetic attraction, the lock remains securely closed. The matching key aligns the magnets so that the locking mechanism releases and the lock can be opened.

Pioneering
in Latch, Hinge and
Fastening Technology



Quarter-Turns



Swinghandles



Rod Latches

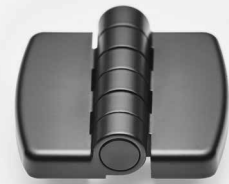


Handles



Fastening Technology

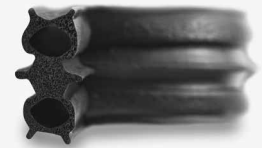
DIRAK[®]



Hinges



Mechatronic Locking Systems



Gaskets

DIRAK is more than that!

We have plenty of other product solutions for your fields of application.

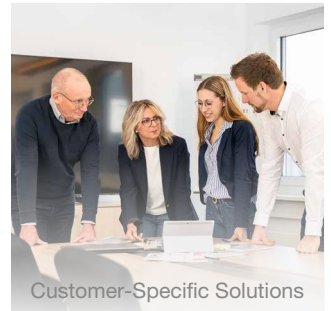
Contact us:

contactrequest@dirak.de
Phone: +49(0) 2333/837-0

DIRAK.com



Latches



Customer-Specific Solutions